

12. Using the G# Intonation Template, put the Pickup Bridge in the right position (**pic. 8**)



Pic. 8

13. As the template is meant for G# guitars with the now common scale length of 530 mm., **a good idea with guitars featuring the 525 mm. scale length is to mark the position of the standard bridge before removing it**, and then put the new bridge at the same position. In any case, a fine adjustment by the help of an electronic tuner is recommended

14. Plug the mini-plug at the end of the pickup cable into the small input on the Pre-amp/Battery Box (**pic. 9**)



Pic. 9

15. Using a standard guitar cable, connect the output of the Acoustic Bridge to an amp of choice

16. Tune up and play

To save battery life be sure to unplug after use!

In the case string height adjustment is needed after installation:

Due to the design of the Pickup Bridge and bridge-saddles, string- height adjustment is performed in the same manner as on a regular acoustic guitar.

Unless you're absolutely sure on how to do this, leave it to a qualified guitar tech.

The Acoustic Bridge is powered by *FISHMAN*

Design/ technical specifications may be subject to change without further notice

MAIL@G-SHARPGUITAR.COM - WWW.G-SHARPGUITAR.COM

THE OLIVIN FJELD



ACOUSTIC BRIDGE

Pat. Pend.



Manual

WWW.G-SHARPGUITAR.COM

IMPORTANT!

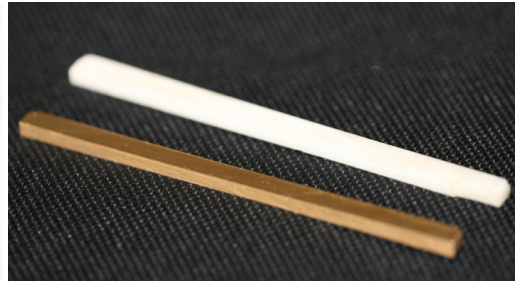
IT MAY BE BORING, BUT PLEASE READ THIS:

The **G#** Acoustic Bridge consists of the following parts:

- Pickup Bridge (**pic. 1**)
- One bone, and one brass bridge-saddle (**pic. 2**). These allow for choosing between two different characters of sound
- Pre-amp / Battery Box (**pic. 3**)
- Fastening Bracket for P/B Box (**pic. 4**)



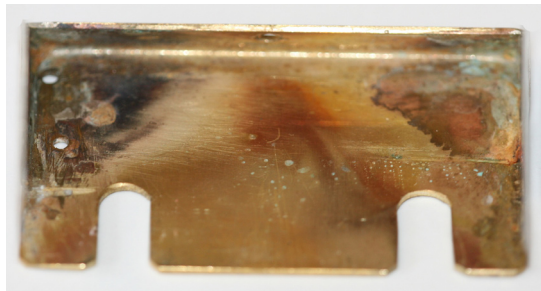
Pic. 1



Pic. 2



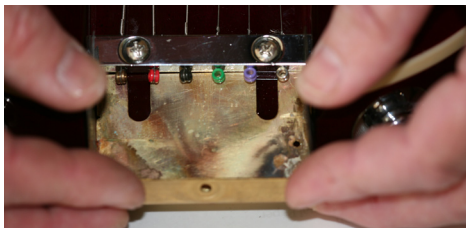
Pic. 3



Pic. 4

Installation requires no modification to the guitar:

1. Tune down to allow the standard floating bridge to come loose
2. Loosen the two tailpiece fastening screws
3. Loosen the tailpiece (no need to remove the strings)
4. Put the slotted end of the Fastening Bracket under the tailpiece as shown on **pic. 5**



Pic. 5

5. Make sure the ground cable remains in place under the tailpiece
6. Tighten the tailpiece fastening screws just enough to allow the Fastening Bracket to be adjusted back and forth
7. Use the fastening screw at the rear part of the Pre-amp/Battery Box to fasten it to the Fastening Bracket (**pic. 6**)



Pic. 6

8. Adjust the P/B Box back and forth so that no part of it comes in contact with the tailpiece and string ball ends (**pic. 7**)



Pic. 7

9. Remove the P/B Box, and tighten the tailpiece mounting screws
10. Put the P/B Box back in place
11. Decide which style of bridge saddle to try first; then put the chosen one into the saddle-slot in the Pickup Bridge